

# NESTLE

## *SIGNAGE REQUIREMENT*

BY CONVERGE





FACTORY ID





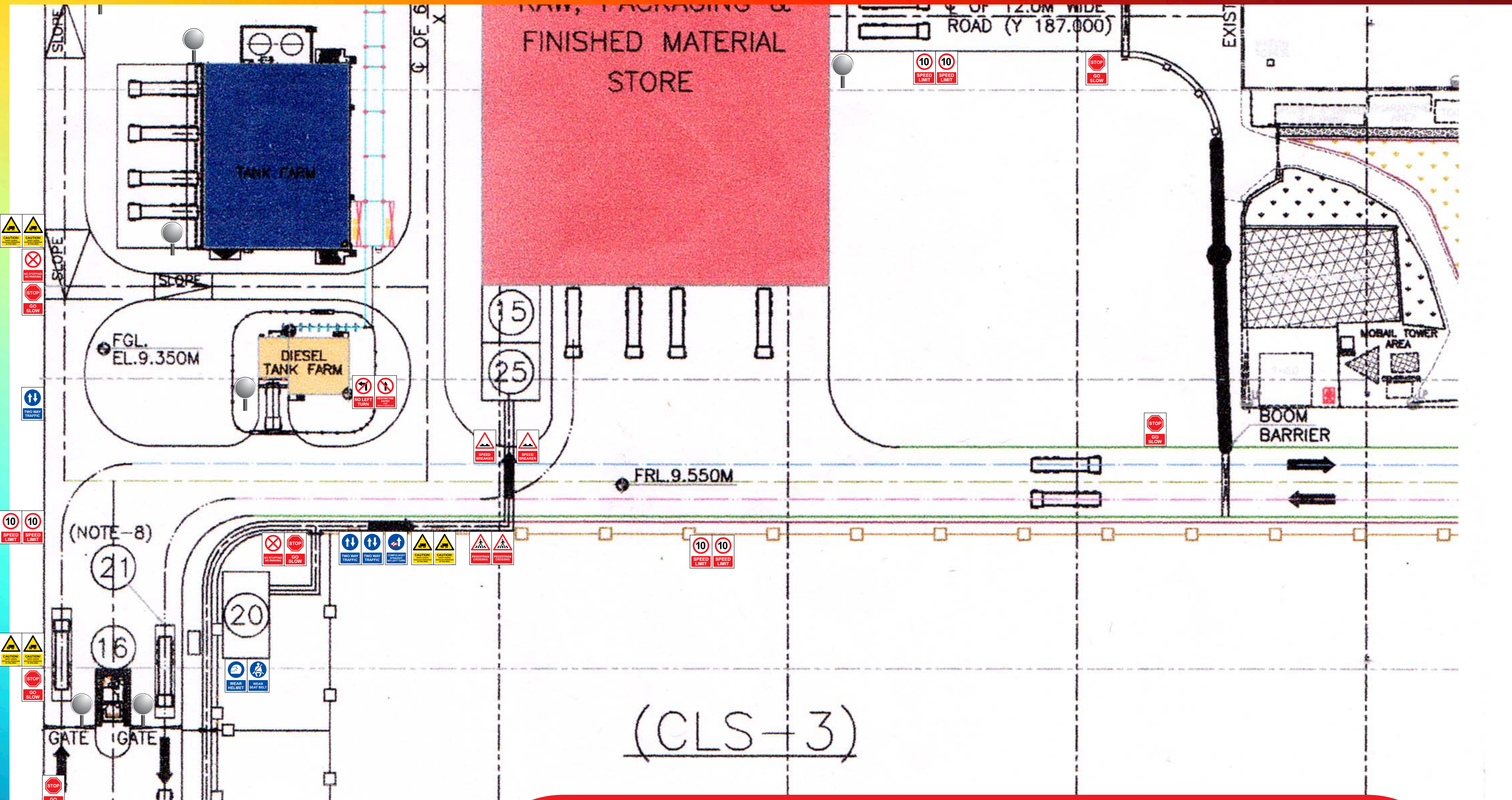
# IMPORTANT POLICIES & INFORMATION DISPLAYS





# WAYFINDING



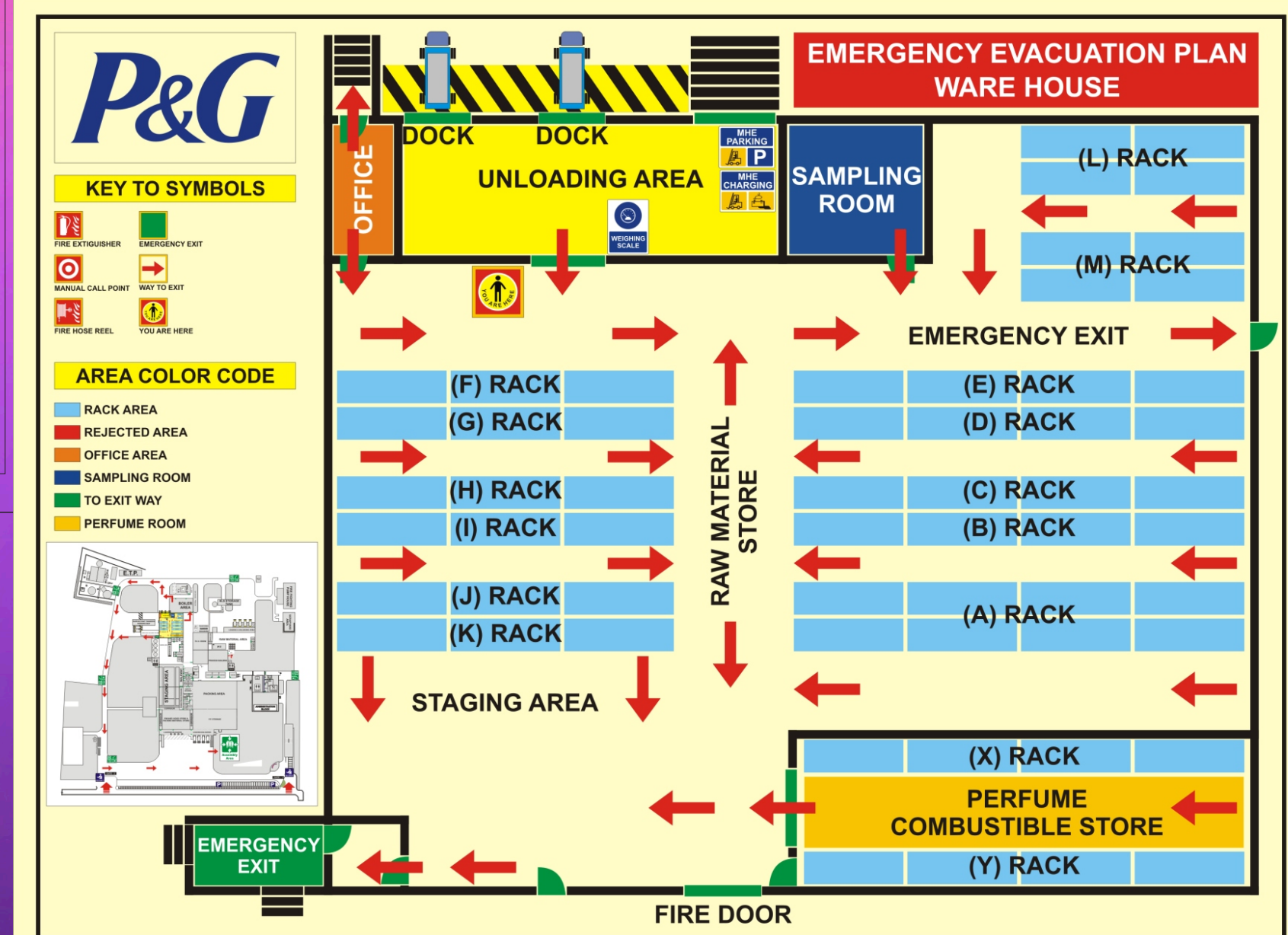
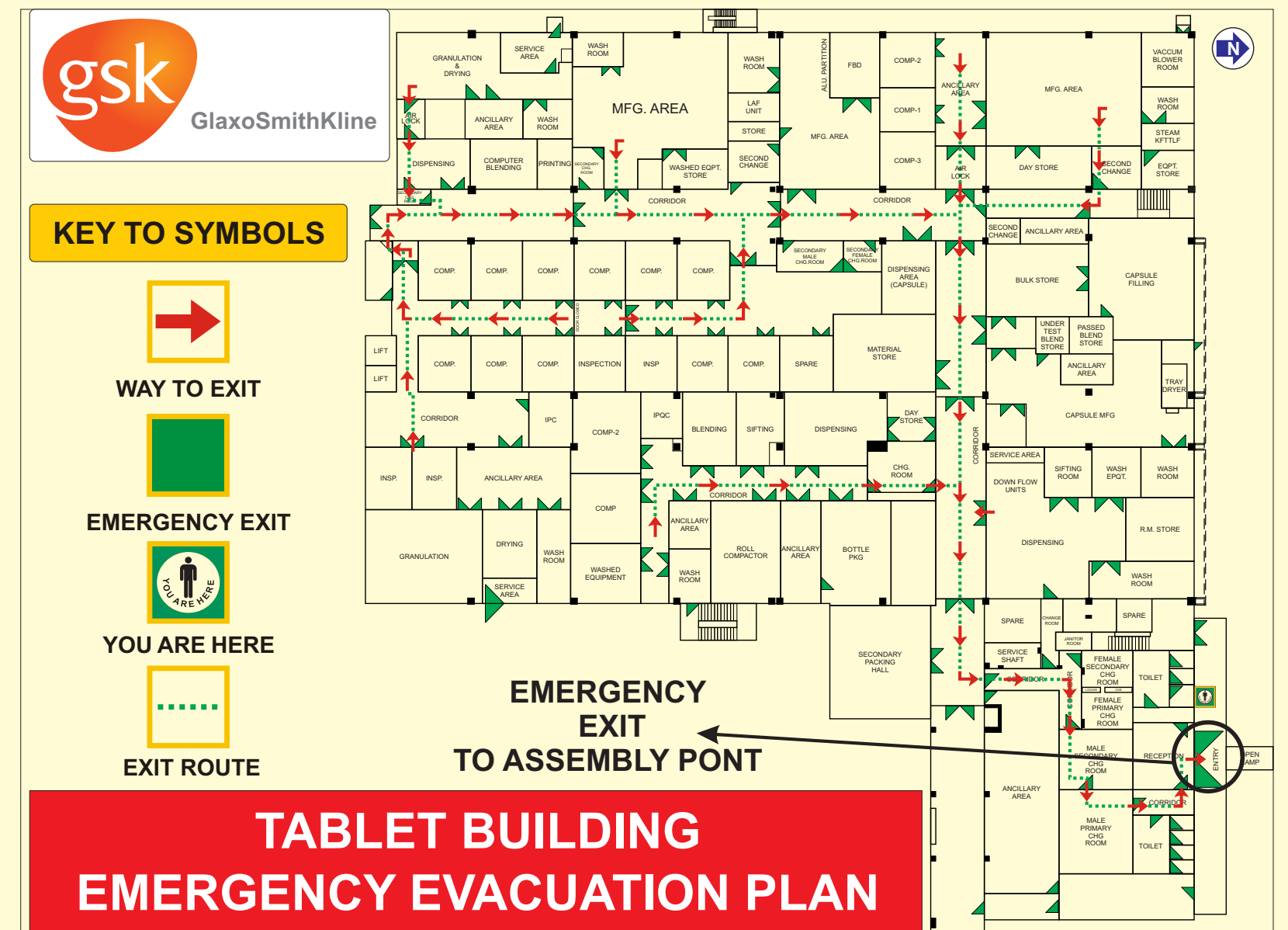
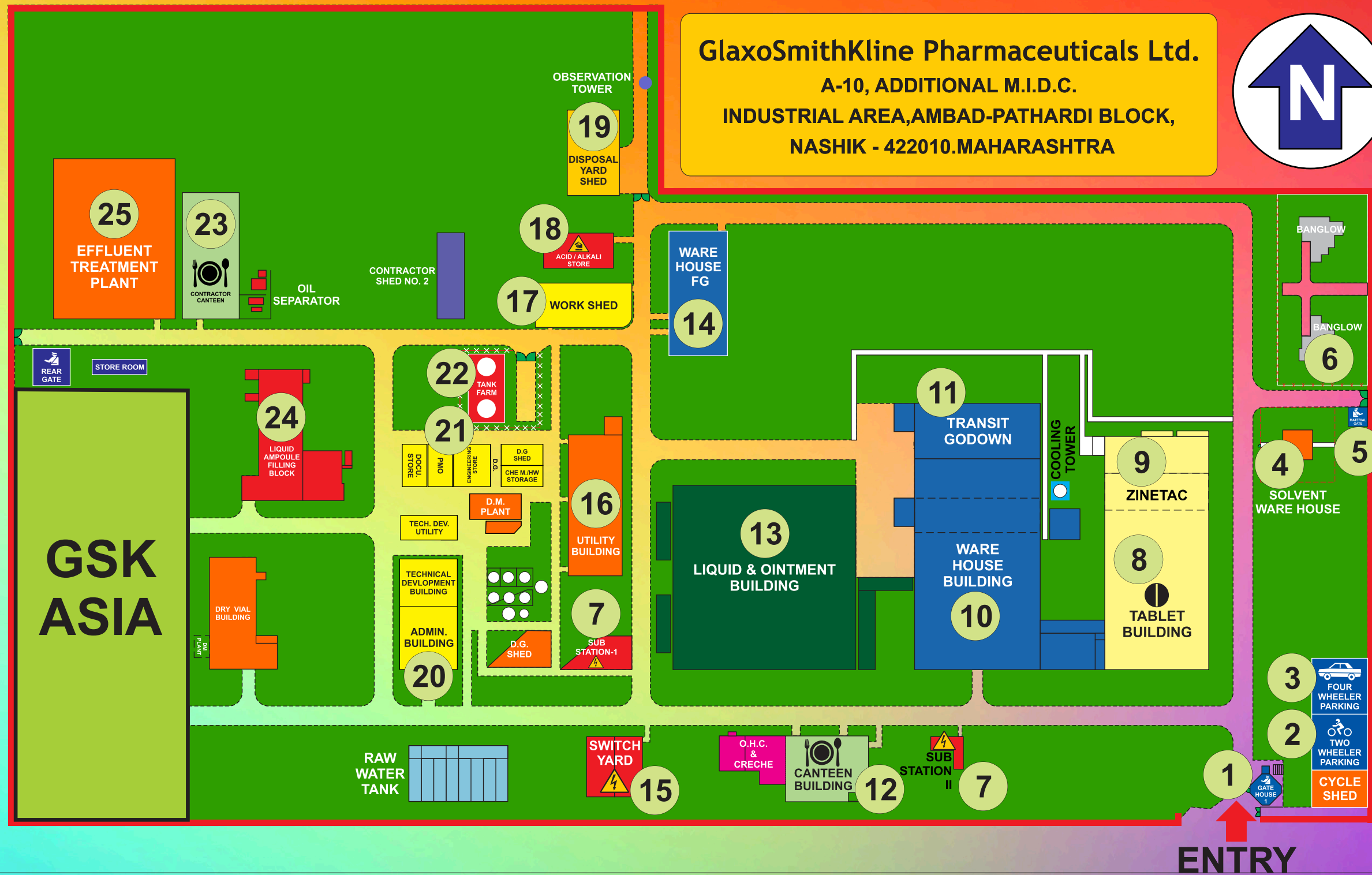


# TRAFFIC MANAGEMENT





1	GATE HOUSE-1
2	TWO WHEELER PARKING
3	FOUR WHEELER PARKING
4	SOLVENT WARE HOUSE
5	MATERIAL GATE
6	STAFF QUARTERS
7	SUB-STATION-1&2
8	TABLET BUILDING
9	ZINETAC BUILDING
10	WARE HOUSE BUILDING
11	TRANSIT GODOWN
12	CANTEEN BUILDING
13	LIQUID & OINTMENT BUILDING
14	WARE HOUSE FG
15	SWITCH YARD
16	UTILITY BUILDING
17	WORK SHED
18	ACID/ALKALI STORE
19	DISPOSAL YARD SHED
20	WORKSHOP BUILDING
21	ENGINEERING STORE
22	TANK FARM
23	CONTRACTOR CANTEEN
24	LIQUID AMPOULE FILLING BLOCK
25	EFFLUENT TREATMENT PLANT



# EMERGENCY EVACUATION & SITE LAYOUT



SAFE

BY CHOICE

NESTLE INDIA LTD ,TAHLIWAL



Good Food, Good Life

PERSONAL PROTECTIVE EQUIPMENT - ( PPE ) BOARD

AREA - QUALITY ASSURANCE LABORATORY

CHEMICAL NAME	PPE TO BE USED	WEARING/REMOVING SEQUENCE
LAB CHEMICALS	B - SAFETY GOGGLES	WEARING E → B → C → D REMOVING D/F → B → E → C
	C - LAB APRON	
	D - RUBBER GLOVES	
	E - ORGANIC VAPOUR MASK	
	F - HEAT RESISTANT GLOVES /COTTON GLOVES	

PPE PHOTO











B

C

D

E

F

WASH YOUR HANDS WITH WATER IMMEDIATELY AFTER HANDLING CHEMICALS



TRANSFORMER - 5



DANGER !  
33000 VOLT.



RESTRICTED ENTRY

CAPACITY : 4000 KVA  
RATIO : 33 KV / 11K V  
MAKE : CROMPTON GREVES  
DATE OF : 27/10/1983  
COMMISSIONING



DANGER !  
33000 VOLT.



RESTRICTED ENTRY





USE FOLLOWING PPE WHILE SWITCHING ELECTRICAL SUPPLY

SWITCH YARD

IMPORTANT LIMITS WHILE ENGINE IN OPERATION

LUBRICATING OIL PRESSURE BEFORE FILTER LESS. THAN - 6 KG / Cm2 AFTER FILTER MORE THAN - 2.2 KG / Cm2.

FUEL OIL PRESSURE - MORE THAN - 1 KG / Cm2.

NOZZLE COOLING - BEFORE FILTER MORE THAN - 1 KG / Cm2.

DM WATER PRESSURE - MIN-0.95 KG/CM2.ON ENGINE.

LUBE OIL TEMP. SHOULD NOT EXCEED 70C.

DM WATER TEMP. SHOULD NOT EXCEED 80C.

EXHAUST TEMP INDIVIDUAL CYLINDER SHOULD NOT EXCEED 380 °C AT AMBIENT TEMP 0 35 °C AT 900 AMP.LOAD.

WATCH EXHAUST FOR SMOKE.

ENGINE RPM SHOULD BE 428.

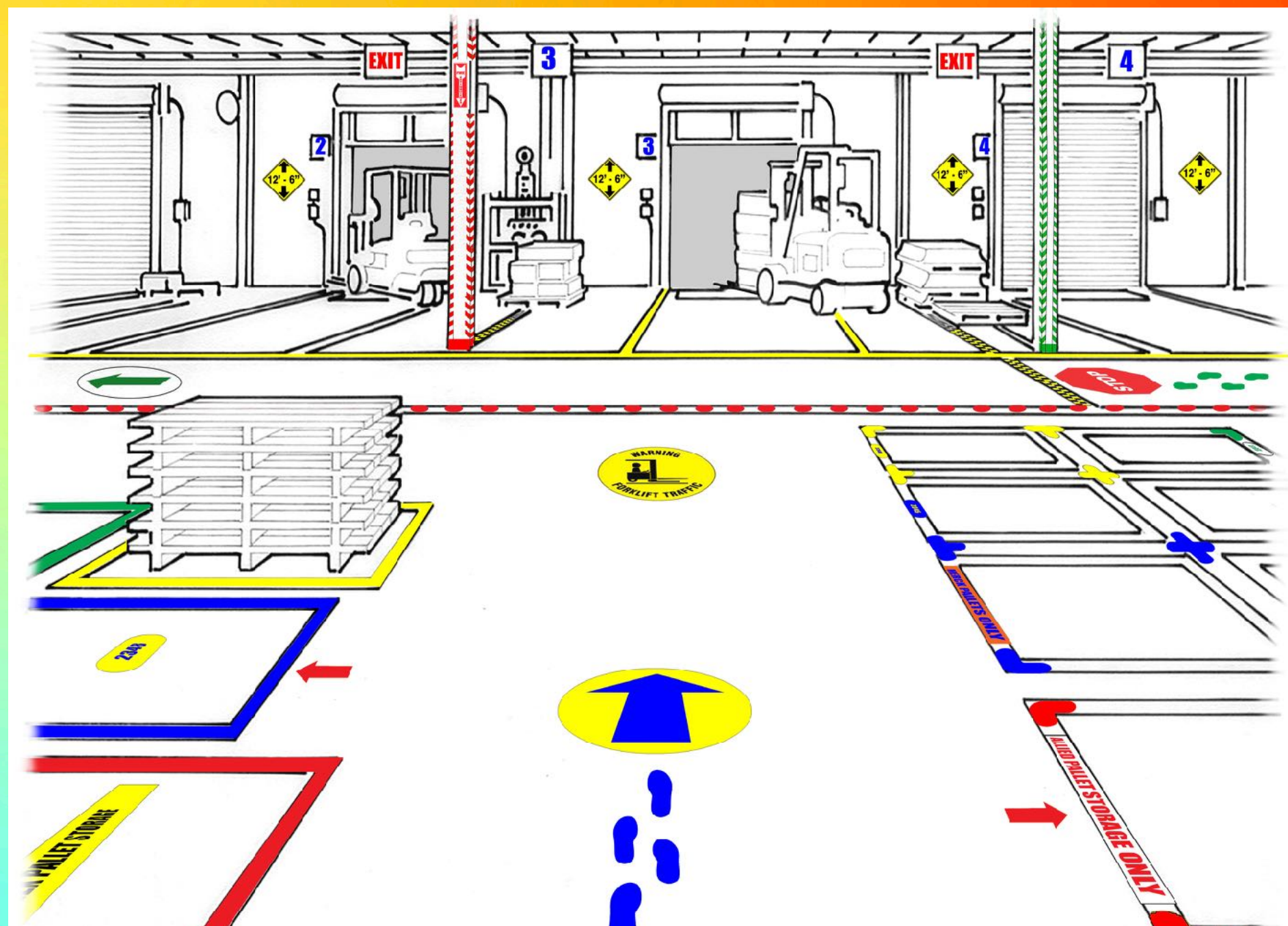


NO HOT WORK WITHOUT PERMIT



SAFETY SIGNAGE





MARKING FOR PRODUCTION AREA



# DIGITAL ELEMENT

- TRAINING VIDEOS WHICH CAN BE DISPLAYED ON SAFETY TRAINING
- SCREENS TO RUN SAFETY FILMS AS WELL AS DIGITAL SAFETY POSTERS

CONVERGE CAN PROVIDE BOTH CONTENT WHICH IS CUSTOMISED FOR YOUR FACTORY AS WELL AS HARDWARE TO RUN THE CONTENT.

